



SAILING INSTRUCTIONS - PART I
2011 ROLLO WHEELER MEMORIAL REGATTA
APRIL 16 & 17, 2011

TABLE OF CONTENTS

RULES	1.0
ELIGIBILITY	2.0
NOTICES TO COMPETITORS	3.0
CHANGES IN SAILING INSTRUCTIONS	4.0
SAIL NUMBERS	5.0
SCHEDULE OF RACES	6.0
SCORING	7.0
TROPHIES	8.0
RESTRICTED AREAS	9.0
RESTRICTED LINES	10.0
START AND FINISH LINES, SATURDAY	11.0
COURSE SELECTION AND DIVISION SIGNALS, SATURDAY	12.0
START SEQUENCE, SATURDAY	13.0
START AND FINISH LINE, SUNDAY	14.0
POSTPONEMENT	15.0
INDIVIDUAL RECALL	16.0
GENERAL RECALL, SATURDAY	17.0
INTERFERENCE WITH COMMERCIAL VESSELS	18.0
PROTESTS	19.0
COURSES	20.0
MARKS	21.0
TIME LIMIT	22.0
DIVISIONS, SATURDAY	SAILING INSTRUCTIONS, PART II
START TIMES, SUNDAY	SAILING INSTRUCTIONS, PART II

1.0 RULES: The regatta will be governed by the Racing Rules of Sailing, 2009-2012, the prescriptions of USSailing, the Northern California PHRF rules, the class rules of each respective one-design class, the Notice of Race and these Sailing Instructions. RRS 75.1 requiring membership in a yacht or sailing club is waived. The regatta is designated as Advertising Category A.

2.0 ELIGIBILITY: Eligibility is defined in the Notice of Race.

3.0 NOTICES TO COMPETITORS: Any notices will be posted on the Race Bulletin Board located on the South wall in the bar area of Berkeley Yacht Club and on the BYC website: <http://www.berkeleyyc.org>.

4.0 CHANGES IN SAILING INSTRUCTIONS: Any change in these instructions will be posted before 0900 on the day it will take effect and will be available from the Race Committee boat before the 1st Warning Signal each day of racing.

5.0 SAIL NUMBERS: Prior to the start of any of the races, it shall be the responsibility of each competitor to notify the Race Committee of any sails to be flown with a number differing from that specified on her entry form. Finishing yachts failing to make such notification may not be scored.

6.0 SCHEDULE OF RACES: (Saturday and Sunday races are independent events. See Sec. 8 - Trophies)

6.1 Saturday, April 16, 2011: Providing weather conditions permit, there will be three races. There will be three groups: The Wheeler Group, the City of Berkeley Group and the Multihull Group. The races are scheduled as follows:

Race #	Div.	Signal	Time
1	First Division of a Group	Warning	12:00
2 & 3	First Division of a Group	Warning	As soon as is practical after the finish of the last boat in a Division.

See Sailing Instructions, Part II for Division and Group assignments.

6.2 Sunday, April 18, 2011: The Sunday race is a "pursuit" race, with the slowest rated yachts starting first. The First Warning will be at 12:00. This signal will be synchronized to GPS as closely as possible. If a postponement is deemed necessary, the new Warning will be on an integral multiple of 5-minute intervals thereafter, and will be announced on VHF radio. (See 14.2) See Sailing Instructions, Part II for the scheduled starting time of each entrant.

7.0 SCORING:

SATURDAY: All races count equally in determining the trophy winners. The low point scoring system, RRS Appendix A, will be used, modified as follows: DNF, RAF & OCS = # boats starting + 1; DNC = # boats starting + 2; DSQ = # boats starting + 3. There will be no throw-outs. Abandoned races will not be rerun. The Time-On-Time method will be used for the scoring of all handicap divisions. $650/(550 + PHRF)$ will be used as the Time Correction Factor (TCF).

SUNDAY: The Time-On-Distance method will be used to assign starting times, whereupon Scoring will be via finishing order.

8.0 TROPHIES:

8.1 Trophies for the Saturday event will be awarded in each division. The number of entrants in each division will determine how many trophies to be awarded. Trophies for the Sunday "pursuit" race will be awarded to the first 5 finishers of the monohull Group and to the first finisher of the multihull Group.

8.2 The Wheeler Memorial Perpetual Trophy will be awarded to the overall corrected time winner in the Wheeler Group of the Saturday series.

8.3 The City of Berkeley Trophy will be awarded to the overall corrected time winner in the City of Berkeley Group of the Saturday series.

8.4 PHRF ODR (One Design Rating) will be used in overall calculations for any One Design Divisions within a Group.

8.5 The Nimitz Trophy will be awarded to the overall corrected time winner in the Multihull Group.

8.6 All trophies will be awarded on the basis of the standings prior to the deciding of any protests. Should any of the standings subsequently be changed by the protest results, it shall be the responsibility of the respective parties to make whatever trophy transfers become necessary.

8.7 Saturday's trophies will be awarded at BYC Saturday evening as soon as practicable. Sunday's pursuit race trophies will be awarded at BYC as soon as practicable after the Sunday race.

9.0 RESTRICTED AREAS: The ruins of the Berkeley Pier and the lines between the closest associated shore to the following shall be considered as obstructions: the bell buoy off the West end of Alcatraz and the outer most rocks off Point Blunt (extending to any buoy marking same). Furthermore, if any part of a yacht or her equipment crosses any of these obstructions, she shall not correct, as per RRS 28.1. Instead she shall be considered to have violated a rule of RRS Part 2, and shall act in accordance with RRS 44.1 and 44.2 (Two turns penalty).

10.0 RESTRICTED LINES:

10.1 While the starting sequence is in progress, a yacht whose Warning signal has not yet been given shall sail no closer than 200 feet from the start line.

10.2 For this event, the start and finish lines are NOT restricted.

11.0 START AND FINISH LINES, SATURDAY:

11.1 WHEELER GROUP: The start and finish line for all races will be between an orange flag on a Committee boat and an inflatable buoy, both located in the vicinity of Olympic Circle Buoy "FOC".

11.2 CITY OF BERKELEY AND MULTIHULL GROUP: The start line will be between an orange flag on a Committee boat and Olympic Circle Buoy "XOC". There are two choices for the finish line. (See 20.0). Finish line "Finish (X)" will be the same as the start line. Finish line "Finish (Deck)" will be between a blue shape on the northeast corner of the Berkeley Yacht Club deck and the speed limit sign on the North side of the Marina entrance.

11.3 VHF Channels: The Committee for the WHEELER Group will use VHF 78. The Committee for the CITY OF BERKELEY Group will use VHF 71.

12.0 COURSE SELECTION & DIVISION SIGNALS, SATURDAY: Numeral pennants will be used to indicate the course to be sailed. Alpha pennants will be used to indicate the Division starting. See Sailing Instructions, Part II for Division assignments and associated Alpha pennants.

13.0 START SEQUENCE, SATURDAY: The start sequence of RRS26 will be used. Races shall be started by using the following signals. Times shall be taken from the visual signals; the absence of a sound signal shall be disregarded.

<i>Signal</i>	<i>Flags and sounds</i>	<i>Minutes before start</i>
<u>Warning</u>	<u>Class & Course - 1 sound</u>	<u>5</u>
<u>Preparatory</u>	<u>P, I, - 1 sound</u>	<u>4</u>
<u>One-minute</u>	<u>P, I & Course removed - 1 sound</u>	<u>1</u>
<u>Start</u>	<u>Class removed - 1 sound</u>	<u>0</u>

The Warning signal for each succeeding division may be made with the starting signal of the preceding division. The Course Flag may be left up.

It is recommended that a yacht, upon finishing the 1st race, pay close attention to Division and Course signals for the subsequent races. Races may be started while there are still yachts on the race course. Division and Course for each start will also be announced on VHF radio.

14.0 START AND FINISH LINES, SUNDAY:

14.1 The start and finish line, Sunday, will be between an orange flag on the committee boat and buoy "FOC" on the Olympic Circle.

14.2 The Committee will use VHF 78.

15.0 POSTPONEMENT: The signal to postpone will be the hoisting of the Answering Pennant, announced by two sound signals. The postponement period will end with the lowering of the Answering Pennant, announced by one sound signal. One minute after the ending of the postponement period, the Warning signal will be made and the starting sequence resumed. Yachts will then start in the same order, but at correspondingly delayed times.

16.0 INDIVIDUAL RECALL:

16.1 **SATURDAY:** Recall will be indicated by hoisting Code Flag "X" accompanied by a sound signal.

16.2 **SUNDAY:** There will be no visual signal from the committee boat indicating premature starters (Amends RRS 29.1).

16.3 **BOTH DAYS:** Race committee will attempt to hail the sail number any yacht recalled using VHF radio; however, it is the responsibility of each yacht to make a proper start.

17.0 GENERAL RECALL, SATURDAY: Recall of an entire starting division will be signaled by the display of the First Repeater Code Pennant and two sound signals. The Warning signal for a new start of the recalled division shall be made one minute after the First Repeater is removed (one sound), and the starts for any succeeding divisions shall follow the new start.

Entrants are advised to pay close attention to class flags and to monitor their VHF radio for announcements regarding Division starting order.

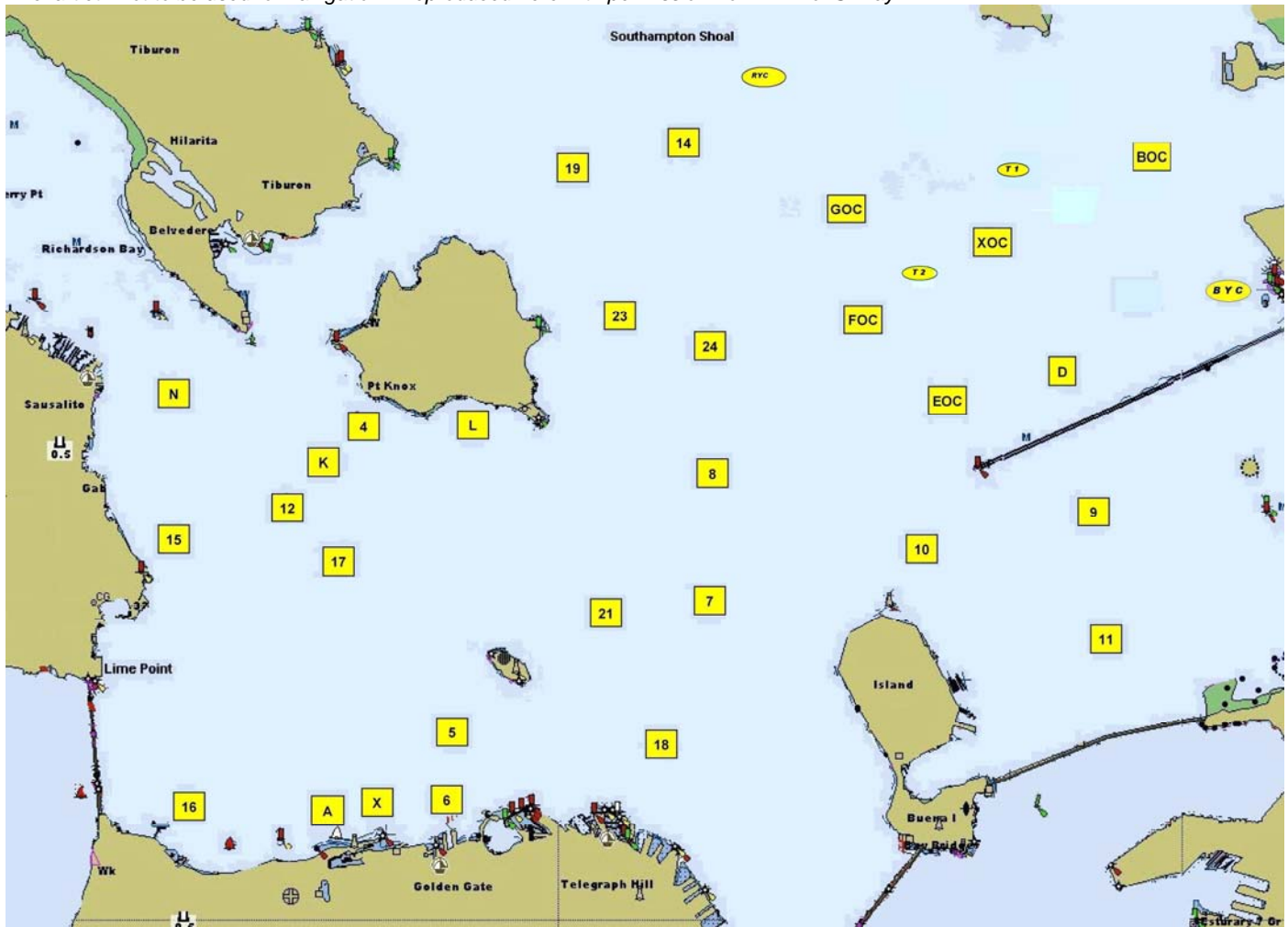
18.0 INTERFERENCE WITH COMMERCIAL VESSELS: Yachts shall not impede the passage of ship traffic while racing. Rule 9 of the Inland Rules of the Road applies with respect to all shipping traffic on San Francisco Bay and its tributaries. A violation of Rule 9 is subject to protest by any competitor and/or by the race committee. Compliance with RRS 60-63 will not be required with respect to a protest involving a Rule 9 infraction. A violation of Rule 9 may not be exonerated by an alternate penalty.

19.0 PROTESTS: Protests must be filed in accordance with RRS 61. They must be postmarked no later than April 18, 2011 and mailed to:

Wheeler Protest Committee c/o Bob Gray
3837 LaCresta Ave., Oakland, CA 94602

All interested parties will be notified of the time, date and location of the protest meeting.

A chartlet - not to be used for navigation. Reproduced here with permission from YRA of SFBay



20.0 COURSES: (All course marks are to be rounded) See Section 11 for definitions of start and finish lines.

SAT: WHEELER GROUP (Round all marks to port)

- | | |
|------------------------------------|--------|
| 1) Start, EOC, 14, EOC, 14, Finish | 8.1 nm |
| 2) Start, 7, FOC, 7, Finish | 8.0 nm |
| 3) Start, 21, Finish | 5.0 nm |
| 4) Start, 2, Finish | 6.3 nm |
| 5) Start, 17, Finish | 7.2 nm |
| 6) Start, 19, FOC, 19, Finish | 8.4 nm |
| 7) Start, 14, EOC, 14, Finish | 8.0 nm |

SAT: CITY OF BERKELEY GROUP (Round all marks to port, except round as indicated in course 16)

- | | |
|---|--------|
| 1) Start, D, GOC, D, GOC, Finish (X) | 7.1 nm |
| 2) Start, EOC, T1, Finish (X) | 3.5 nm |
| 3) Start, EOC, BYC, T1, EOC, T1, Finish (X) | 8.0 nm |

4) Start, FOC, BOC, FOC, BOC, Finish (X)	8.0 nm
5) Start, FOC, D, BOC, FOC, BOC, Finish (X)	8.8 nm
6) Start, GOC, BYC, GOC, Finish (X)	7.0 nm
7) Start, GOC, D, GOC, D, Finish (X)	7.1 nm
8) Start, GOC, D, GOC, Finish (X)	5.4 nm
9) Start, GOC, D, BYC, GOC, Finish (X)	7.6 nm
10) Start, FOC, BOC, Finish (X)	4.0 nm
12) Start, GOC, BYC, Finish(X)	5.0 nm
13) Start, D, GOC, D, Finish (Deck)	6.0 nm
14) Start, EOC, T1, EOC, Finish (Deck)	6.75 nm
15) Start, FOC, BOC, XOC, Finish (Deck)	6.0 nm
16) Start, GOCp, Dp, XOCs, Finish (Deck)	5.7 nm

SUN: 1) Start, 18s, 17s, T2s, Finish	10.1 nm
2) Start, 17p, 18p, T2p, Finish	10.1 nm
3) Start, RYCp, 18p, Finish	10.1 nm

21.0 MARKS: (See chartlet.)

BYC: Yellow can .4 nm W of Berkeley Yacht Club (37-52.0268 N x 122.19.499 W)

BOC, EOC, FOC, GOC and XOC: yellow cans on the Olympic Circle

RYC: Yellow can .6nm NNE of Southampton Shoals Platform (37-53.35 N x 122-23.65 W)

D: FI G 4s 15ft "3" 1.6 nm W of Berkeley Yacht Club on the Olympic Circle

2: Alcatraz Island

7: R "2" FI 6s 1 nm NW of Treasure Island

8: R"4" FI 4s Horn 1 nm East of Point Blunt

21: G "1" FI G 6s .65 nm NE of Alcatraz

17: RG "HR" FI (2+1) R 6s, Harding Rock

18: Blossom Rock RG "BR" FI (2+1) G 6s Bell

19: R "8" FI R 2.5s approx. 1.5 nm east of Bluff Pt.

14: Southampton Shoals Platform

T1: Club inflatable approximately .75nm @ 0 degrees from XOC

T2: Club inflatable approximately .75 nm leeward of FOC

Missing marks will be replaced with inflatable club marks.

22.0 TIME LIMIT: (Both days)

Yachts finishing after 1700 hours will be scored DNF.

SAILING INSTRUCTIONS - PART II SATURDAY DIVISIONS AND SUNDAY PURSUIT RACE SCHEDULE

Sailing Instructions - Part II will be posted on the BYC Web site late afternoon Friday, April 15, 2011. Printed copies will also be available approximately 1800 hours, April 15 at BYC.